

Where Are Your Connections?

A Coordinated Approach to Primary Prevention

Gretchen Clarke

Brittany Freitas-Murrell

Lexi Prunella



STRATEGIC
PREVENTION SOLUTIONS
Bringing Communities to Wellness Through Research, Evaluation and Training



What is Primary Prevention?

Primary Prevention

Means stopping **violence** before it ever starts!

bullying

suicide

substance abuse



Welcome to the Connections Selector!

This tool makes it easier for you to connect the dots and explore the relationships between multiple types of violence and the risk and protective factors they share at each level of the **social-ecological model (SEM)**. A clear understanding of these connections can help you **plan strategies to prevent** multiple forms of violence at once and increase public health impact.

How Does It Work?

You can start with any one of three categories – SEM, Risk and Protective Factors, or Violence Types – then explore the results to get a clear picture of how they all interrelate.

Social-Ecological Model (SEM)

Select the Individual, Relationship, Community, or Society level of the SEM to see the risk and protective factors at that level and the violence types associated with each.

Risk and Protective Factors

Within any level of the SEM, click on a risk or protective factor to see the violence types associated with it.

Violence Types

Click on any violence type to explore the risk and protective factors associated with it at each level of the SEM. To deselect a violence type, simply click its button again.

To view connections among multiple violence types, click at least two violence type buttons, and the tool will show only the risk and protective factors shared by those types of violence.

To clear all selections, click the RESET button.

<https://vetoviolence.cdc.gov/apps/connecting-the-dots/node/5>



Comprehensive Prevention

**PREVENTION AT ALL
LEVELS OF THE
SOCIAL ECOLOGY**



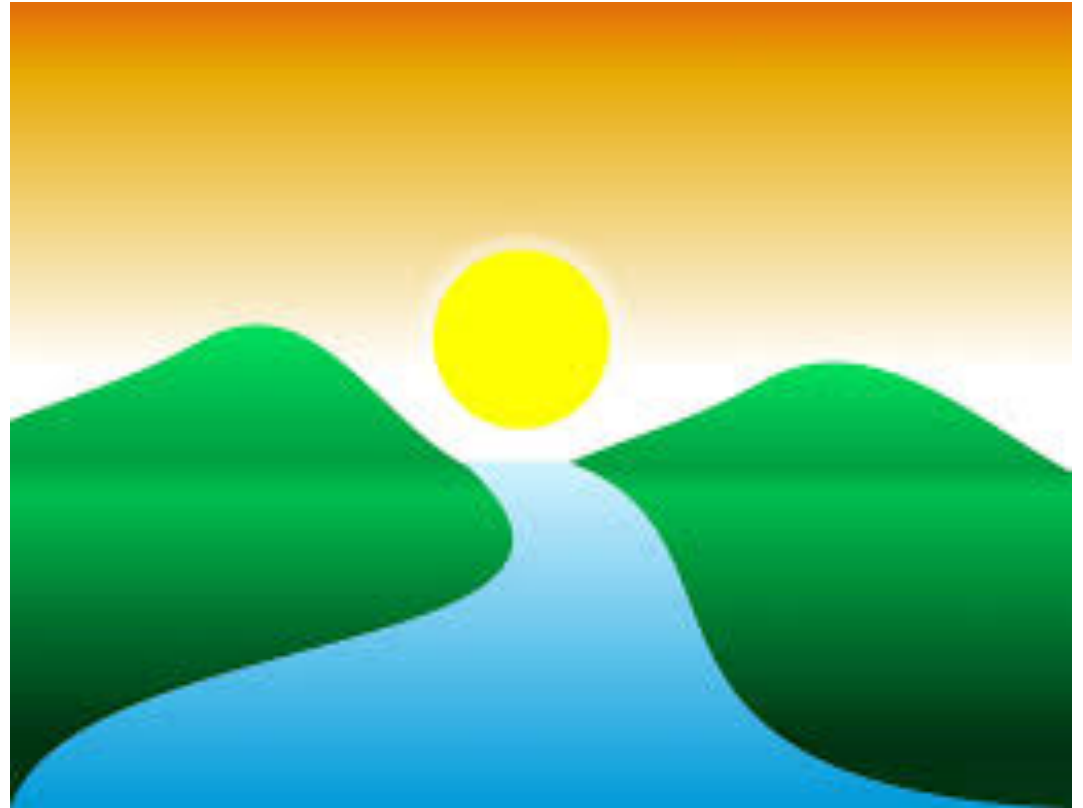
Prevention Across Alaska



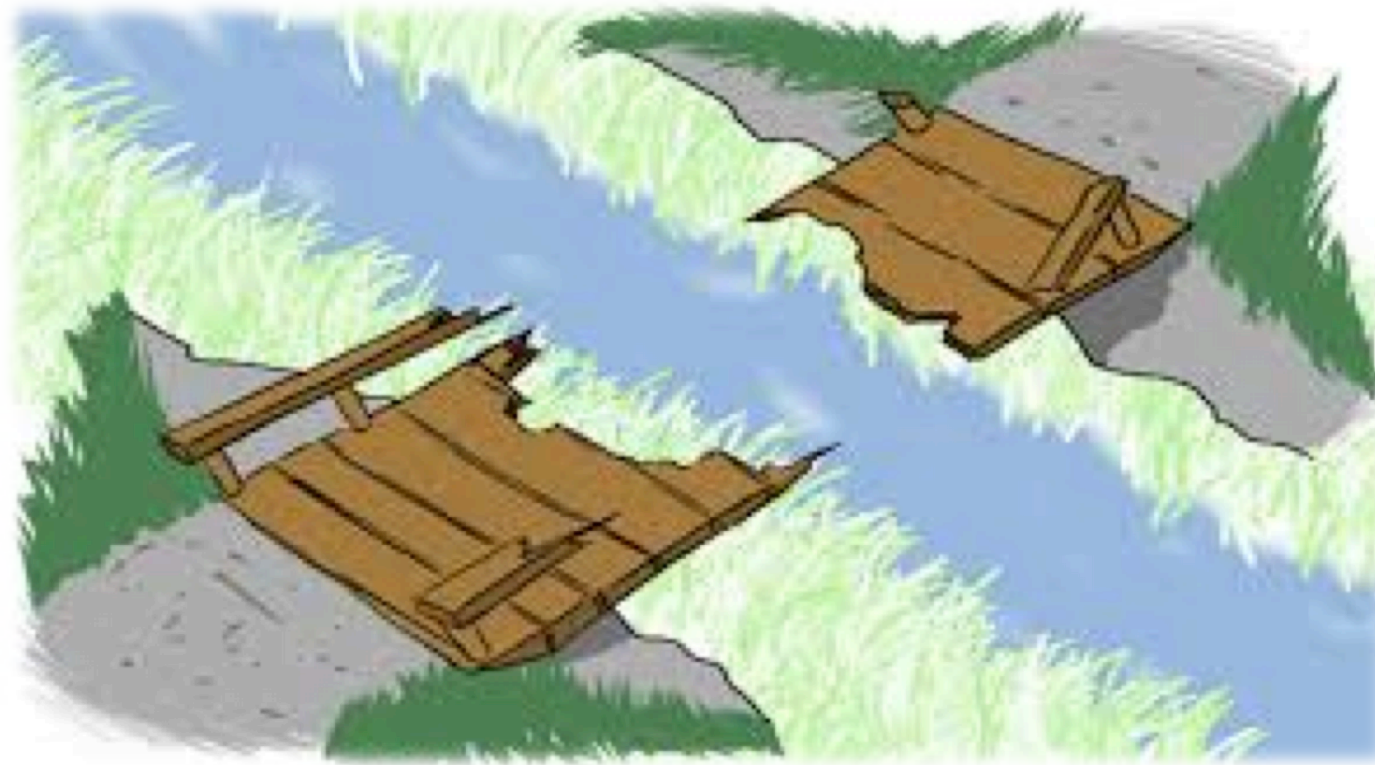
and many other partners!



The River Parable



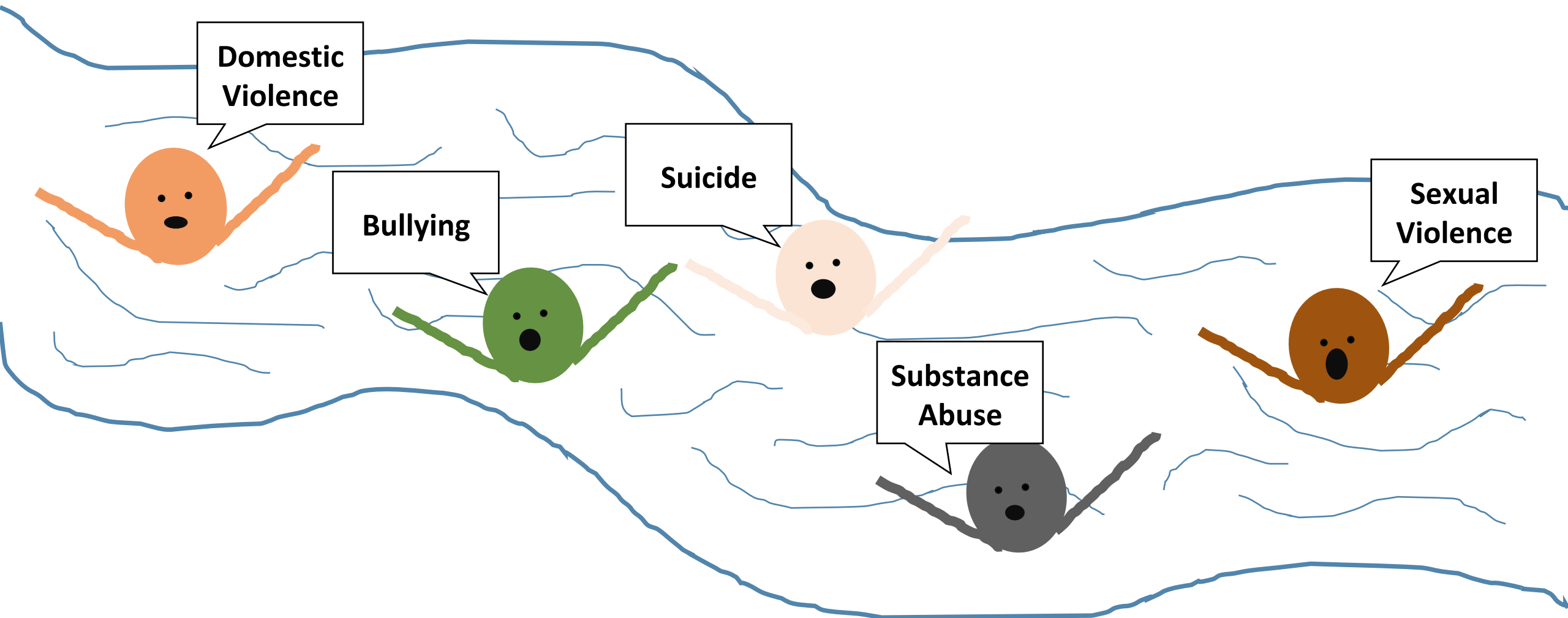
Upstream



**On their own, these
can't become ...**



this.



A lot of people are drowning from a lot of different issues.

Shared Risk Factors

	Underage Drinking	Bullying	Teen Dating Violence	Domestic Violence	Suicide	Child Abuse/Neglect
Feeling alone, hopeless	X	X	X	X	X	X
Poor mental health	X		X	X	X	X
Lack of healthy problem solving skills	X	X	X	X	X	X
Community norms and laws	X	X	X	X	X	X
Harmful norms around masculinity		X	X	X	X	X
ACEs	X	X	X	X	X	X

Source: Wilkins, N., Tsao, B., Hertz, M., Davis, R., Klevens, J. (2014). Connecting the Dots: An Overview of the Links Among Multiple Forms of Violence. Atlanta, GA: National Center for Injury Prevention and Control, Centers for Disease Control and Prevention Oakland, CA: Prevention Institute. <https://vetoviolence.cdc.gov/apps/connecting-the-dots/node/5>

Building our Bridge

An Activity

What Risk and Protective Factors are you working on?

Example

Risk/**Protective** Factor: ↑ *youth-adult connectedness*

Program: *Sources of Strength*

Community Name

Substance Abuse Prevention

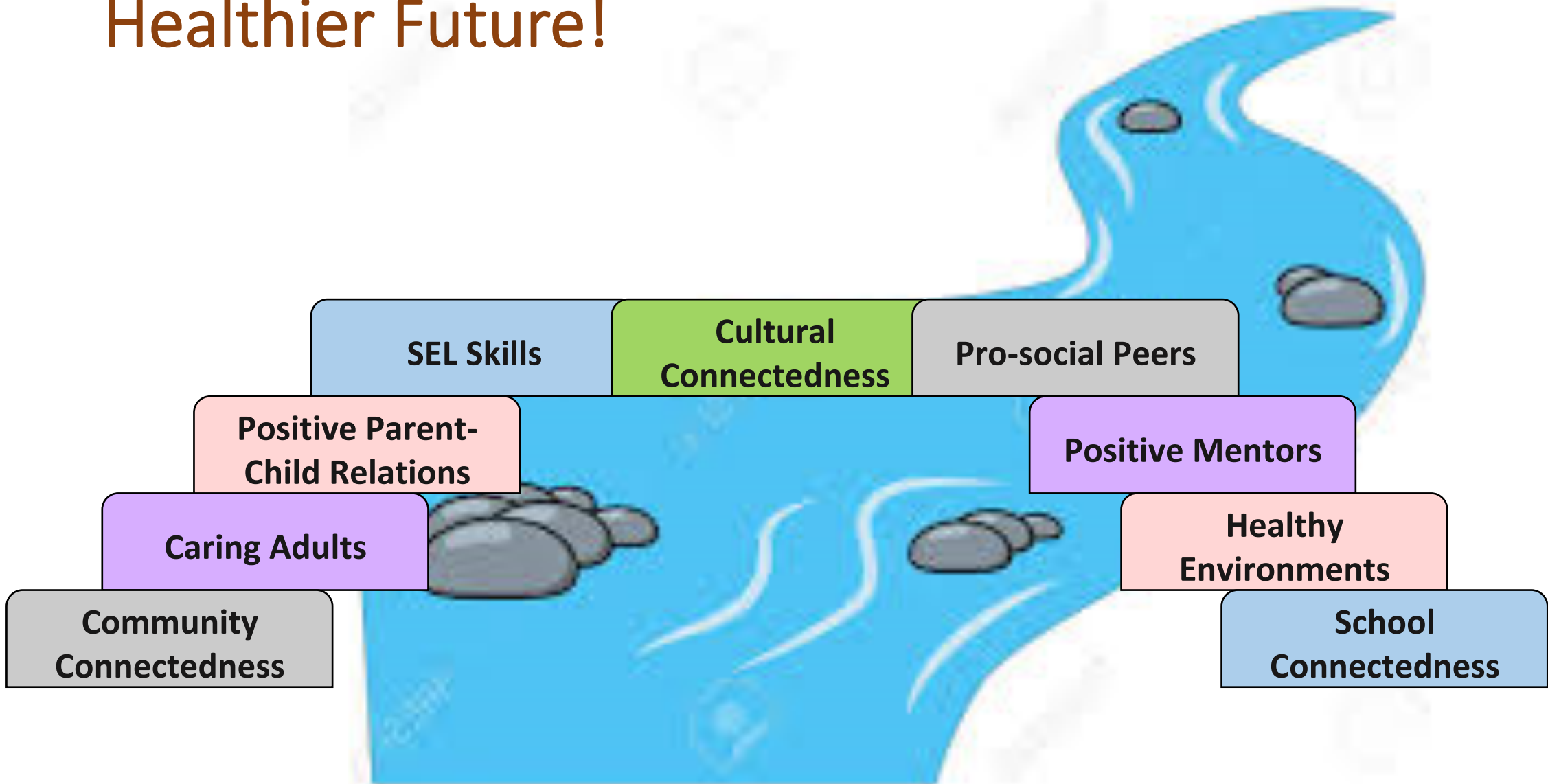
Domestic Violence Prevention

Sexual Violence Prevention

Suicide Prevention

Bullying Prevention

Working Together, We Can Build a Safer, Healthier Future!



“As we go into communities to bring everybody to the table, don’t let people say, ‘I work on child abuse, but this is about gang violence.’ **Don’t let people say, ‘I work on violence against women, and this is about child abuse.’ This thing, all this violence, is connected.**”

Deborah Prothrow-Stith, MD

Adjunct Professor, Harvard School of Public Health

Enjoy the Summit!

Gretchen Clarke, Gretchen.Clarke@icf.com

Brittany Freitas-Murrell, brittany@strategicpreventionsolutions.com

Lexi Prunella, lexi@strategicpreventionsolutions.com

