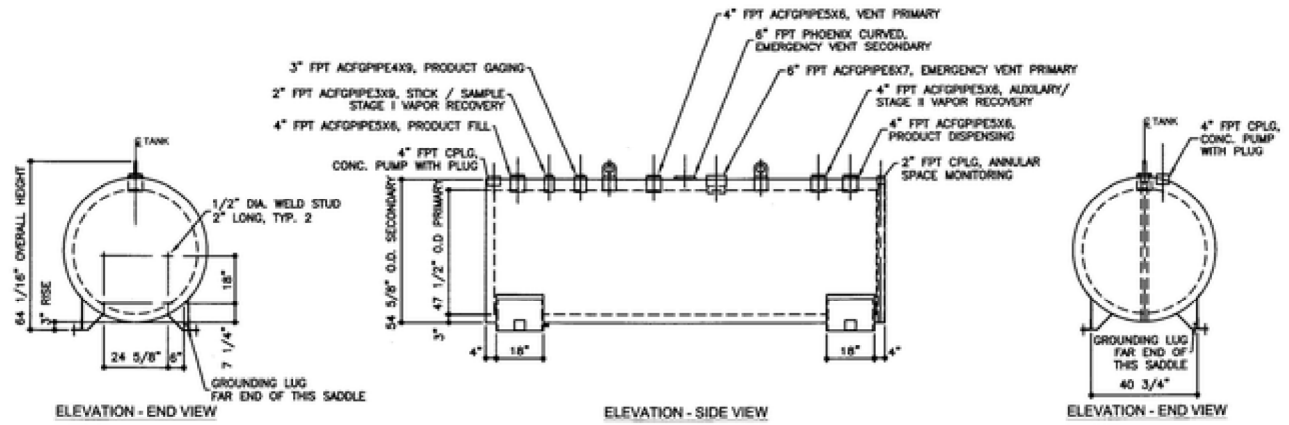


TOP VIEW



ELEVATION - END VIEW

ELEVATION - SIDE VIEW

ELEVATION - END VIEW

TOLERANCES UNLESS OTHERWISE SPECIFIED CAPACITY: ±0.5% OVERALL LENGTH: ±0.125" OVERALL WIDTH: ±0.125" OVERALL HEIGHT: ±0.125" OTHER DIMENSIONS: ±0.125"	UL 2088 & UL 142 (BUILT & LABELED) ST175H1 (BUILT & LABELED) HOLDDOWNS ARE SEISMIC RATED DOUBLE WALL WITH 3" INSULATION CYLINDRICAL FIREGUARD WITH SUPPORTS	STEEL: ASTM A36 PRIMARY TANK SHELL: 10 GAUGE (3/16") HEAD: 10 GAUGE (3/16")	COATING: EXTERIOR: ACE 3A COATING SP-6 GRIT BLAST 3A COLOR: #W101 (WHITE) 1 CT TN-101 EPOXY 3.0-5.0 MILS 1 CT TN-74 URETHANE 2.0-3.0 MILS TDF 3.0-6.0 MILS	SPECIAL INSTRUCTIONS FILL ANNULAR SPACE WITH PORTLAND CEMENT / PERLITE, CEMENT GRADE MIX. LEAVE 1" AIR GAP BETWEEN PERLITE & SECONDARY TANK INTERSTITIAL SPACE: 57 CUBIC FEET	APPROXIMATE SHIPPING WEIGHT 5,500 LBS. 3,650 LBS. (WITHOUT CEMENT) TANK VENT CAPACITY 147,000 PRIMARY 168,000 SECONDARY	SHEET 1 OF 2
	FIREGUARD - 1,100 GALLON AC01100U2G1 QTY: 1	SECONDARY TANK SHELL: 6 GAUGE (3/16") HEAD: 6 GAUGE (3/16")	INTERIOR: BARE STEEL	01-01-02 SUPERCEDES 10-01-01		