

Alaska State Troopers Alaska Bureau of Alcohol and Drug Enforcement



2007 Annual Drug Report



2007 Annual Drug Report



Table of Contents

Introduction 3

Our Mission 3

Staffing and Support..... 4

Nature of Alaska’s Drug Problem 5

Drugs of Choice 6

 Alcohol..... 7

 Cocaine 8

 Marijuana..... 9

 Methamphetamine..... 10

 Prescription Drugs..... 12

ABADE Unit Overview..... 13

 Alaska Interdiction Task Force 14

 Fairbanks Area-wide Narcotics Team..... 16

 Major Offender Unit 19

 Mat-Su Drug Enforcement Team..... 21

 South Central Area-wide Narcotics Team 24

 Southeast Alaska Narcotics Enforcement Team 26

 Western Alaska Alcohol and Narcotics Team..... 29

 Canine Unit..... 32

DEA Anchorage Narrative & Statistics 33

Emerging Trends in 2007 34

Summary 35



Introduction

The Alaska State Troopers, Bureau of Alcohol and Drug Enforcement in authoring this publication, has endeavored to represent the drug situation in Alaska in a manner that provides the broadest possible picture of the true situation.

There are numerous agencies that conduct drug investigations in Alaska. While some agencies have a less formal relationship, most work closely with the Alaska State Troopers. In order to properly represent the true drug situation in Alaska, statistics from agencies other than those that participate in Alaska Bureau of Alcohol and Drug Enforcement are included in this report. Information provided by all sources should be considered when attempting to measure how drugs are impacting the citizens of this state.

We believe including as much information from all agencies involved in drug enforcement in Alaska is vital when analyzing the needs of the state in the arena of drug enforcement. However, it is important to note that the numbers alone should not be the sole source from which to make a complete assessment of the true drug situation in Alaska. To get the truest picture of the drug situation within Alaska we have attempted to take into account the anecdotal information gathered from conversations with those investigators on the frontlines of Alaska's war and drugs.

Our Mission

Alaska Bureau of Alcohol and Drug Enforcement

The Alaska State Troopers, Alaska Bureau of Alcohol and Drug Enforcement (ABADE) provides a leadership role in coordinating law enforcement's efforts to reduce the availability of alcohol and controlled substances throughout Alaska. ABADE recognizes that a successful alcohol and drug program depends upon a unified effort blending traditional law enforcement techniques with demand reduction programs that address educational, social, and community concerns.

ABADE's mission is to:

- ❖ Interdict and seize alcohol and controlled substances that are illegally distributed throughout Alaska.
- ❖ Identify and arrest distributors of controlled substances and illegal alcohol.
- ❖ Provide training and investigative support to criminal justice agencies.
- ❖ Support and participate in public education programs.



Staffing and Support

ABADE recognizes that because of Alaska's geographical vastness and ethnic diversity, no single law enforcement agency is capable of handling the drug and alcohol problems alone. Using a combination of federal and state funding, ABADE helps to fund a number of multi-jurisdictional forces around the state. ABADE encourages cooperative efforts between federal, state and local law enforcement agencies and has taken a leadership role in fostering and developing many of these cooperative arrangements through multi-jurisdictional and/or multi-agency efforts. The ABADE headquarters office in Anchorage supports seven (7) investigative teams throughout the state. These teams are broken down by region as follows:

Alaska Interdiction Task Force (DEA sponsored)

Fairbanks Area-wide Narcotics Team

Major Offender Unit

Mat-Su Drug Narcotics Enforcement Team

South Central Area-wide Narcotics Team

Southeast Alaska Narcotics Enforcement Team

Western Alaska Alcohol and Narcotics Team

The Alaska National Guard Counter Drug Support Program (CDSP) provides additional personnel support in several ABADE units. They provide operational resources, which include, but are not limited to manpower, equipment, and logistical support to federal, state, and local law enforcement throughout Alaska. Financed under a special congressional appropriation, there is no cost to the State of Alaska for CDSP personnel. This program contributes numerous resources not normally available to law enforcement agencies for assistance specific to drug investigations.

ABADE participates with and receives assistance from several investigative agencies involved in drug enforcement. These agencies include the Drug Enforcement Administration (DEA), Federal Bureau of Investigation (FBI), the U.S. Postal Inspection Service, the Internal Revenue Service (IRS), Bureau of Alcohol, Tobacco, Firearms and Explosives (BATF) and U.S. Immigration and Customs Enforcement (ICE). ABADE also works closely with other law enforcement agencies on a state and local level.



Nature of Alaska's Drug and Alcohol Problem

Members of Alaska's law enforcement community and others who are part of Alaska's criminal justice system have long known that the greatest contributing factor to violent crimes, including domestic violence and sexual assault, is drug and alcohol abuse. It is also widely recognized that many of the accidental deaths that occur in Alaska are related to alcohol use. This is especially true in the western regions of the state and is clearly shown through statistics drawn from the Alaska State Trooper case management system in 2006. Of all cases initiated by the Alaska State Troopers in 2006, 43% involved drugs and/or alcohol.

While there is no question that many aspects of the drug and alcohol problem are unique to Alaska, ABADE strives to provide a continuing and coordinated effort that not only meets the needs of Alaska, but is also dovetailed with the National Drug Control Strategy. The strategy underscores the social and economic costs to society and was developed to provide general guidance and a framework for federal, state, and local agencies in developing a counter drug effort. The strategy's established goals are:

- Educate and enable America's youth to reject illegal drugs as well as alcohol and tobacco.
- Increase the safety of America's citizens by substantially reducing drug-related crime and violence.
- Reduce health and social costs to the public from illegal drug use.
- Shield America's air, land and sea frontiers from the drug threat.
- Disrupt foreign and domestic drug sources of supply.



Drugs of Choice

Alcohol, cocaine, methamphetamine, marijuana and pharmaceuticals have been identified as the primary substances of abuse and are the focus of most law enforcement efforts. During 2007, law enforcement officials continue to see methamphetamine use and manufacturing as a significant problem. Another area of significant interest is the abuse of prescription drugs, many of which are obtained with fraudulent prescriptions. Other drugs such as LSD, Ecstasy and designer “club” drugs were also cause for concern. Based on anecdotal information there is a significant increase in the availability of these controlled substances throughout Alaska but primarily in our more urban areas.



Alcohol

Alaska's criminal justice professionals recognize that alcohol is the primary substance of abuse in Alaska and is the leading cause of violent, suicidal, and accidental deaths, especially in rural areas. Currently, 136 communities have voted in favor of local option statutes prohibiting the sale, importation, and/or possession of all alcohol. Because alcohol remains legal in many areas of Alaska, illegal bootlegging activities continue to be a problem in the local option communities. Alcohol is easily transported to the villages via the U.S. Postal Service, local air carriers, private aircraft, boat, snow machines and express mailing services. Bootlegging alcohol of all types has become a very lucrative business in rural Alaska.

The Alaska State Troopers applied for and received federal funding for five investigators whose function is focused on alcohol issues. In 2007, these five investigators along with three others were cross deputized with the United States Postal Inspectors. For a third of 2007, the Kotzebue investigator position was vacant, but the remaining four investigators dedicated a significant amount of their time to alcohol investigations to include shipments through the U.S. Mail. This resulted in alcohol seizures of approximately 881 gallons in 2007. We believe this has had a positive effect in many rural communities and is due in large part to our partnership with the United States Postal Inspectors.

The economics of the illegal sales of alcohol is staggering. For example, a bootlegger can purchase a 750-milliliter bottle of alcohol legally for \$10 or less in an urban liquor store. The same bottle of alcohol in Bethel, Kotzebue or Barrow may sell for \$50. In the more remote communities, alcohol can easily sell for \$150 to over \$300 per bottle depending on the supply and demand. The initial purchase for the bootlegger involves a minimal cash investment, a maximum cash return with little threat of being caught or criminally charged. A dollar-for-dollar comparison of alcohol and drugs purchased in Anchorage and then resold in many Alaskan villages breaks down as follows:

Substance	Investment	Return *
Cocaine	\$1.00	\$1.50
Marijuana	\$1.00	\$4.00
Alcohol	\$1.00	\$15.00

* Calculated at \$150 per bottle

Alcohol seized by ABADE (gallons)

2005	2006	2007
994	709	881.41

Alcohol related charges/arrests by ABADE

2005	2006	2007
384	312	628



Cocaine

Cocaine continues to be a widely used and lucrative drug for sale in Alaska. Cocaine is readily available in most areas of the state and is seen with great frequency in powder form and crack cocaine in the major urban areas such as Anchorage and Fairbanks.

Cocaine is brought into Alaska concealed on passengers or in luggage through ports of entry such as the Ted Stevens Anchorage International Airport, and it is also shipped via the US Post Office or commercial parcel companies such as FedEx or UPS.

The cocaine brought into Alaska is typically packaged in kilogram quantities and later broken down by dealers into smaller quantities for retail sale. In powder form, it is normally sold in gram quantities for \$100-150 and its primary method of ingestion is by snorting.

Crack dealers use a process involving powder cocaine, water, baking soda and heat to produce crack cocaine, which is then sold in small rocks for \$20. The primary method of use for crack is by smoking.

The statistics below show powder and crack cocaine seizures reported to and seized by ABADE in Alaska during 2007. These numbers do not include seizures made by the Anchorage Police Department. Seizures made by the Alaska Interdiction Task Force are also included in the statistics for the Drug Enforcement Administration on page 35.

Cocaine seized by ABADE (kilos)

2005	2006	2007
27.87	21.44	41.55

Cocaine related charges/arrests by ABADE

2005	2006	2007
194	182	216



Marijuana

Marijuana is available throughout the state and is viewed as a gateway drug to other drugs for young adults and teenagers. Demand for Alaskan-grown marijuana continues to be high as a result of its exceptional tetrahydrocannabinol (THC) content. Because Alaskan produced marijuana is extremely high quality; Alaska is considered a marijuana exporting state. However, there is also a significant market for “BC Bud” brought into Alaska from British Columbia.

ABADE teams continue to find extremely sophisticated indoor growing operations. Most commercial marijuana growing operations are found in communities along Alaska’s road system. The Mat-Su Valley area continues to lead the state in identified and eradicated marijuana grows followed by Fairbanks and the Kenai Peninsula. It is not unusual for sites to be located in homes with hidden or underground rooms specifically designed for the cultivation of marijuana. These rooms are often equipped with surveillance cameras and state-of-the-art timers controlling temperature, lighting, water, humidity and air purifiers. Many grows are found during and/or after fires. Also many lease/rental and abandoned housed are damaged by the remodeling and humidity of a grow operation.

In some parts of the state, the local economy is directly affected by the influx of money from illegally produced marijuana. Proceeds from marijuana production are used for a multitude of purchases including fuel, grow equipment/supplies, utilities, vehicles, ATV’s and building materials.

Marijuana seized by ABADE (pounds)

2005	2006	2007
105	763	145.47

Marijuana related charges/arrests by ABADE

2005	2006	2007
706	1,132	1,108



Methamphetamine

Methamphetamine use continues to be on the rise throughout the United States including Alaska. Methamphetamine, also known as meth, speed, crank, crystal, and ice, produces an increase in energy and alertness and a decrease in appetite. The effects, which also include an intense rush, can last up to 12 hours. It can be smoked, snorted, injected, or taken orally.

DEA continues to conduct training in Alaska so that police officers will have the skills, knowledge, and tools to safely investigate suspected clandestine laboratories. There is now a sizable cadre of trained officers across the state. These officers are available to assist in the eradication of clandestine meth labs. They consist of federal, state, and local officers. In order to stay compliant with OSHA regulations, these members require annual re-certification as well as constant replacement of one-time-use equipment.

DEA has been extremely helpful in assisting in the cost of clean-up at clandestine lab sites. This requires a certified clean-up company to respond to the scene of each location, containerize larger items as well as the containers of chemical. These containers are then transported to a location for safe long-term storage and/or destruction.

In 2007, we have seen a drop in the number of meth labs discovered in Alaska. However, the meth labs discovered continue to be present in single and multi-family residences in many neighborhoods. In addition to meth labs producing illegal, often deadly drugs, the clandestine nature of the manufacturing process and the presence of ignitable, corrosive, reactive, and toxic chemicals at the sites, have resulted in explosions, fires, toxic fumes, and irreparable damage to human health and to the environment. Yearly since 2002, meth labs were discovered in hotel/motel rooms. Frequently children are found residing in meth lab sites and many continue to live in dangerous environments. Loaded firearms are also frequently found at these meth labs, which increases the danger to children living in these residences.

Meth Labs seized by ABADE

2005	2006	2007
42	18	11

Some of the commonly available items used in the manufacturing of meth include, Ephedrine or pseudoephedrine (found in cold/allergy tablets), lithium batteries, starter fluid, rock/table salt, matchbooks, coffee filters, acetone, aluminum foil and assorted kitchen glassware.

With the decrease in meth labs we have observed an increase in the volume of processed meth that is being imported from source cities into Alaska. Throughout Alaska there is a trend to have relatively large amounts of methamphetamine arrive already in a processed and usable form. The same tends to be true for coastal commercial fishery related communities.



Meth seized by ABADE (grams)

2005	2006	2007
2,782.74	7,971.06	3,952.30

Meth related charges/arrests by ABADE

2005	2006	2007
234	117	144

For information and ideas regarding the response towards the meth epidemic in parts of the United States, go to www.montanameth.org, www.mfiles.org.



Prescription Drugs

The sale and abuse of prescription drugs such as Oxycontin/Oxycodone, Methadone, and Hydrocodone continued to be an issue in 2007. These drugs are sought for their pharmaceutical purity and ability to alter the central nervous system. With the identification of this increasing health hazard, a statistical capture plan has been developed to examine the true impact anticipated in the upcoming years. Not only does the abuse of prescription drugs create a health hazard for the users, it creates a financial tragedy in the communities. The drugs vary in price and can cost anywhere from one dollar per milligram to two dollars per milligram depending on availability. With the increased demand for the drugs and a shortening of supply, many abusers may not have the money or insurance to pay for their addiction. Thus increasing property and violent crimes in these communities. It has been reported that tens of thousands of dollars are being spent to feed this growing abuse and addiction.

Prescription drugs have been linked to the following crimes; homicide, assault, prescription fraud, home invasion thefts and pharmacy robberies. People who are addicted to prescription drugs facilitate their addiction by doctor shopping, pharmacy shopping, forgery, and purchasing the drugs via the Internet. Law enforcement is especially concerned for the welfare of particularly vulnerable populations such as the elderly and those with severe long-term illnesses such as cancer.

It is the intent of the ABADE to increase pressure on those involved in the non-medical use, abuse, and sales of these addictive drugs.

Hydrocodone seized by ABADE (dosage units)

2005	2006	2007
64	521	432

Oxycontin/Oxycodone seized by ABADE (dosage units)

2005	2006	2007
435	1,589	2,176.50

Other prescription drugs seized by ABADE (dosage units)

2005	2006	2007
1,782	1,179	1,862.50



Alaska Bureau of Alcohol and Drug Enforcement Overviews

The map below gives a visual overview of the seven teams and their areas of responsibility that comprise the Alaska Bureau of Alcohol and Drug Enforcement. Each team works hand-in-hand with local law enforcement agencies and, in most locations, also with federal law enforcement agencies.



Alaska Interdiction Task Force

The Alaska Interdiction Task Force (AITF) is a federally funded task force sponsored by the Drug Enforcement Administration (DEA). The Alaska State Troopers turned over supervision of the task force to the DEA in July 2002. Prior to that the unit was known as the Airport Interdiction Task Force and the unit's primary mission was focused solely on airport interdiction efforts. The AITF is now responsible for investigations that involve drug trafficking at various ports of entry to include passengers and luggage arriving at airport terminals, packages and cargo shipped through parcel delivery services, and commercial cargo carriers. The AITF is strategically located in Anchorage near the Ted Stevens International Airport, allowing the unit easy access to the airport and shipping companies where most passengers and parcels arrive.

The AITF team members consist of a DEA group supervisor, two DEA agents, two Alaska State Trooper investigator / K9 handlers, one Anchorage Police officer, one Airport Public Safety officer, one Immigration & Customs Enforcement agent, one member of the National Guard Counter Drug Support Program (CDSP) and an AST criminal justice technician.

2007 Overview

FEBRUARY

The AITF seized 6,200 pills of ecstasy and three kilograms of cocaine from various ports of entry into Alaska.

MARCH

The AITF seized 6,000 hits of LSD, 14 kilograms of cocaine, one kilogram of methamphetamine, 2,000 tabs of ecstasy, one kilogram of crack cocaine, and \$21,000 from various ports of entry into Alaska.

MAY

The AITF seized \$41,000 and 1.2 kilograms of heroin from various ports of entry into Alaska.

JUNE

The AITF seized nine kilograms of cocaine, one kilogram of methamphetamine, and \$45,000 from various ports of entry into Alaska.

SEPTEMBER

The AITF seized \$150,000 and two kilograms of crystal methamphetamine from various ports of entry into Alaska.

OCTOBER

The AITF seized \$60,000, 166 marijuana plants and 1.2 pounds of methamphetamine from various areas in Alaska.



NOVEMBER

The AITF seized nine kilograms of cocaine, one kilogram of crystal methamphetamine, and \$37,000 from various ports of entry into Alaska.

DECEMBER

The AITF seized 601 marijuana plants and nine assault rifles from a suspect located in Wasilla.



Fairbanks Area-wide Narcotics Team

The primary area of responsibility for the Fairbanks Area-wide Narcotics Team is interior Alaska, which includes Fairbanks and the surrounding area, north to Barrow, and east to the Canadian border. This team is made up of one AST sergeant, two AST investigators, a Fairbanks Police Department investigator, a North Pole Police Department investigator, an AST criminal justice technician and a member of the National Guard Counter Drug Support Program. The ABADE Fairbanks team works closely with Chief Dan Hoffman of the Fairbanks Police Department and Chief Lindhag of the North Pole Police Department as well as the uniformed patrol section of the Alaska State Troopers to educate, train, and support their efforts related to drug enforcement. The Fairbanks team also works closely with the Drug Enforcement Administration and Alcohol, Tobacco and Firearms agents assigned to the Fairbanks area. DEA and ATF complement the teams' investigative ability by providing additional manpower, resources, and the possibility of federal prosecution of drug traffickers.

Their focus varies from the identification and investigation of street level dealers of crack cocaine to the investigation of large distributors of powder cocaine. Of significant concern in the Fairbanks area is the continuing threat of manufacturing, use, and distribution of methamphetamine. Clandestine methamphetamine laboratories are prevalent in the Fairbanks area and are being operated increasingly in or near single and multi-family homes, where public health and safety is at an extremely high risk. Marijuana cultivation also continues to be a problem in the Fairbanks area.

2007 Overview

JANUARY

Investigators conducted several cocaine investigations which netted 44 grams of cocaine, one AK-47 rifle and \$974. Investigators investigated three marijuana grows in the Fairbanks area where 96 marijuana plants were seized.

FEBRUARY

Investigators seized 3.5 grams of cocaine and 24 marijuana plants.

MARCH

Investigators conducted several investigations which netted 10 marijuana plants, seven grams of crack cocaine, 28 grams of powder cocaine seven grams of methamphetamine and \$4,490.

APRIL

Investigators conducted an investigation into the distribution of ecstasy. The investigation led to the seizure of 406 ecstasy tablets and the seizure of a 2003 Sonata valued at \$6,000. Other Fairbanks based drug investigations in April led to the seizure of 51 marijuana plants, 10.4 grams of processed marijuana and 59.5 grams of cocaine.



MAY

Investigators seized 18 marijuana plants, 56 grams of cocaine and 224 grams of methamphetamine in four separate Fairbanks based drug investigations.

JUNE

Investigators and Fairbanks based DEA agents conducted a controlled delivery of four kilos of cocaine where a 1999 Ford Expedition was seized. Investigators conducted an investigation in the Chena Hot Springs Road area which resulted in the seizure of \$7,450, 42 grams of processed marijuana and 24 grams of mushrooms. Other June investigations resulted in the seizure of one gram of methamphetamine, seven grams of cocaine and 28 grams of crack cocaine

JULY

Investigators conducted a large buy/bust operation that led to one arrest and the seizure of 3 firearms, \$10,292 and 12.5 grams of cocaine. Other Investigations for June resulted in the seizure of 32 marijuana plants, 16 grams of processed marijuana and \$200.

AUGUST

Investigators received and acted on information of several marijuana grows in the Fairbanks area. Investigators served search warrants on three different residences where they seized 264 marijuana plants and a 1991 Cadillac. Other drug investigations resulted in the seizure of 29 grams of cocaine, and a 4-wheeler.

SEPTEMBER

Investigators conducted three marijuana grow investigations which netted 31 marijuana plants and a firearm.

OCTOBER

Investigators received information regarding multiple marijuana grows in a remote area of Fairbanks. The investigation revealed four marijuana grows at four separate houses. Investigator's seized 48 marijuana plants. Investigators, along with Army CID, conducted a buy/bust operation of a suspect who was selling Oxycontin to soldiers. The suspect was arrested and 200 Oxycontin pills were seized. Investigators responded to Tok to investigate several possible marijuana grows. The two operations netted 95 marijuana plants. Investigators received information regarding three additional grows related to one another in the Fairbanks area and seized 50 marijuana plants and 7 firearms. A total of 9 marijuana grows were taken down during the month of October by ABADE Fairbanks investigators. Investigators seized a suspicious USPS package which contained 155 grams of processed marijuana and \$10,000. Other investigations led to the seizure of 84 grams of cocaine.

NOVEMBER

Investigators conducted a controlled delivery of 1.6 pounds of crystal methamphetamine intercepted in a UPS package. Two individuals were arrested in this case. Investigators assisted DEA with a controlled delivery of eight kilos of cocaine that was discovered in two UPS packages. Investigators took down three more marijuana grows in Fairbanks which netted 57 marijuana plants. Other investigations resulted in 88 grams of cocaine, 128 grams of processed marijuana, \$5,752 and a firearm.



DECEMBER

Investigators investigated four marijuana grows in the Fairbanks area where 24 marijuana plants were seized. Investigators tracked down a defendant who had a no bail warrant for a previous marijuana grow. The defendant was located and at the time of his arrest he had over \$900 on his person and a cashier's check made out to himself in the amount of \$18,037 which was also seized.



Major Offender Unit

The Major Offenders Unit (MOU) focuses on major alcohol and drug distributors statewide. The team is comprised of one AST sergeant, four AST investigators, an AST criminal justice technician, and a full-time prosecutor from the Department of Law. The unit is also supported by a member of the Alaska National Guard Counter Drug Support Program.

The MOU works independently and supports other ABADE units as well as local departments and federal agencies as needed. Nearly every investigator has been Clan Lab certified and is called upon to respond to various locations to assist in dismantling clandestine methamphetamine labs.

Co-located with the Alaska Interdiction Task Force in Anchorage, the Major Offenders Unit shares a close working relationship with DEA as well as IRS, BATF, ICE, and the FBI.

2007 Overview

The MOU continued to collaborate with DEA and the U.S. District Attorney's Office on the Raines and Shine drug trafficking organization investigation. In the spring of 2007, this case developed nationwide and international aspects of which the MOU was an integral and preeminent investigative part. This drug trafficking and money-laundering organization was made up of members and assets in the lower 48 states, Canada, Europe and Australia, and Hungary. This investigation led to the seizure of an additional 1.5 million dollars in assets.

The three agencies, MOU, DEA and U.S. District Attorney continued to conduct interviews, proffers, investigations, and financial investigations. The result was further development of additional defendants, suspects, and the uncovering of more illicit deeds, such as smuggling, trafficking, money laundering and structuring.

The MOU investigation in this case also helped the Alaska Bureau of Investigations (ABI) recover approximately \$200,000 in stolen heavy equipment. The investigations led to the establishment of numerous informants and cooperative sources. This investigation developed an abundance of information on many other drug trafficking organizations and money laundering rings within the state of Alaska. The expertise developed during this case was applied as a template to a separate but parallel investigation that allowed ABADE and DEA to seize almost a million dollars in additional assets.

To date, 20 individuals have been indicted with five more indictments anticipated to be handed down during the next year.

The MOU was again able to capitalize on information developed during the 2006 Dillingham undercover operations. Investigative leads developed led to the dismantling of a marijuana growing operation in the Anchorage area and developed information on other growing operations. Another development based on the Dillingham operation led to the seizure of an additional \$140,000 in cash and the seizure of a ½ pound of marijuana from a Dillingham resident.



The MOU has continued to assist the Alaska Interdiction Task Force with investigations such as controlled deliveries. This assistance capitalizes on the force multiplying effects of adding personnel to the task force. MOU investigators have traveled to Fairbanks, North Pole, Juneau, Ketchikan, Cordova, Soldotna, McGrath and Girdwood in this capacity during the past year providing statewide coverage.



Mat-Su Drug Enforcement Team

The Mat-Su Drug Enforcement Team focuses on drug investigations within the Matanuska-Susitna region to include Palmer, Wasilla, Talkeetna, Glennallen, Valdez and Cordova. The team is comprised of one AST sergeant, two AST investigators, one Palmer Police Department officer, one Wasilla Police Department officer, an AST criminal justice technician and one member of the National Guard Counter Drug Support Program. The ABADE Mat-Su team works closely with Chief Russ Boatright of the Palmer Police Department and Chief Angela Long of the Wasilla Police Department as well as the uniformed patrol section of the Alaska State Troopers to educate, train, and support their efforts related to drug enforcement.

This team's primary enforcement duties have shifted from marijuana cultivation to the investigation of clandestine methamphetamine laboratories. However, the Mat-Su region still comprises the bulk of marijuana related seizures throughout Alaska and has long been recognized as the primary area of marijuana cultivation and distribution in the state.

2007 Overview

JANUARY

ABADE Mat-Su seized \$42,568 as part of an ongoing marijuana trafficking case. Three marijuana grow search warrants were served and a total of 421 marijuana plants with a street value of \$842,000 were seized.

FEBRUARY

ABADE Mat-Su served a search warrant on a residence for a suspected methamphetamine lab. Methamphetamine, heroin, cocaine, opiates, several drug kits, and a loaded weapon were seized.

MARCH

ABADE Mat-Su served a glass warrant for an illegal gambling establishment and drug trafficking case. A search warrant was served on a residence in Wasilla for drug trafficking (methamphetamine) which resulted in the discovery of a methamphetamine box lab and evidence of power theft. Investigators seized over an ounce of red phosphorous, a half-full bottle of iodine prill, methamphetamine, chemicals commonly used in the methamphetamine manufacture process, and drug paraphernalia. In addition, several checks belonging to various individuals (possibly stolen) were recovered at the residence. Investigators also located a fugitive from Oregon who was wanted for attempted murder and robbery.

APRIL

Investigators with the ABADE Mat-Su, with the assistance of Palmer Police Department, Wasilla Police Department, and the ABADE units from Anchorage and Soldotna served seven search warrants on a gambling enterprise and associated residences in Wasilla, Palmer and Anchorage. Five persons were arrested in connection with promoting a gambling enterprise. A total of \$9,568 in cash was seized along with several card tables,



assorted merchandise and paperwork. During other search warrant services, 380 marijuana plants were also seized.

MAY

ABADE Mat-Su assisted Wasilla PD with service of a search warrant in Big Lake. The search warrant was for suspicion of stolen property and controlled substances. The search warrant yielded cocaine, numerous controlled prescription medications, methamphetamine, a scale, drug packaging materials, a large sum of money, stolen trailers, a stolen car, and stolen snow machines. Information was received that an adult female was sending letters laced with an opiate to the Mat-Su Pretrial facility. The ABADE Mat-Su conducted an investigation and a search warrant was served at a Houston residence for promoting contraband. Investigators seized numerous types of opiate based prescription medications including Oxycontin. A methamphetamine lab dump site was located in Houston and the investigation revealed that some methamphetamine lab chemicals had been dumped into a nearby stream, as protocol DNR was contacted and notified of the dump site.

JUNE

ABADE Mat-Su served a search warrant at a remote residence in Willow where evidence of a methamphetamine lab was located inside a two-story structure on the property. Another search warrant was served on a vehicle and a mobile methamphetamine lab was located.

JULY

A methamphetamine lab dumpsite was processed from a remote trail in Big Lake. Numerous empty blister packs of pseudoephedrine were seized from the dumpsite and were capable of producing approximately 10 grams of methamphetamine. While investigators were conducting surveillance on a known methamphetamine cook they observed a theft in progress at a local shopping center. ABADE Mat-Su investigators assisted Wasilla Police Department with recovering a freezer from a residence known to be involved in methamphetamine trafficking.

AUGUST

ABADE Mat-Su served a search warrant for a residence in Houston for a marijuana grow operation consisting of 32 plants. In addition, Oxycodone, Hydrocodone, morphine, hashish, processed marijuana, LSD, psilocybin mushrooms, ecstasy, a stolen .44 revolver and cash were recovered during the search warrant service. During the month of August ABADE Mat-Su seized a total of 422 marijuana plants. ABADE Mat-Su also facilitated numerous undercover narcotics purchases to include heroin, cocaine, and Methadone tablets.

SEPTEMBER

A search warrant was served at a residence in Palmer for cocaine trafficking. Crack cocaine, heroin, numerous types of controlled prescription medications, several firearms, scales, packaging materials, various forms of drug paraphernalia, and items used in the manufacturing of crack cocaine were seized. Three search warrants were served simultaneously at three different residences in Wasilla. A large amount of cocaine, cash,



several firearms (some stolen), drug packaging materials, several types of controlled prescription medications, scales, and various forms of drug paraphernalia were seized.

OCTOBER

ABADE Mat-Su obtained search warrants for the purchase of Oxycodone, methamphetamine, morphine tablets, and heroin. A methamphetamine lab dump site was located in the Meadow Lakes area.

NOVEMBER

ABADE Mat-Su conducted a controlled delivery and seized 303 Oxycontin pills with a street value of \$12,520.

DECEMBER

ABADE Mat-Su conducted 14 undercover narcotics purchases of heroin, Oxycodone and morphine resulting in the services of 11 search warrants in the Wasilla, Palmer, and Big Lake areas. Several law enforcement agencies assisted with this effort. Investigators seized 103.54 grams of heroin valued at \$37,274, numerous prescription medications to include methadone, morphine, propoxyphen, Darvocet, subutex, syboxone, Diazepam, Alpraxolam, Roxycodone, Oxycodone, and Hydrocodone, 17 firearms, and six arrests. And a total of six arrests were made.



South Central Area-wide Narcotics Team

Prior to 2005, this unit was part of the Western Alaska Alcohol and Narcotics Team (WAANT) and initially consisted of one AST investigator and one officer from the Soldotna Police Department. With the assignment of a new AST sergeant position in April of 2005, this unit now operates as a separate unit within ABADE, consisting of one AST Sergeant, one AST investigator, one Soldotna Police Department Officer supplied by Chief John Lucking, one part time Kenai Police Department Office supplied by Chief Chuck Kopp and one AST Criminal Justice Technician. Communities within its area of responsibility are located on the Kenai Peninsula (Homer, Soldotna, Kenai, Seward), Kodiak Island as well as Girdwood and Whittier. The unit is dedicated to work closely with the local police departments in these communities and the uniformed patrol units of the Alaska State Troopers to educate and support their efforts in drug enforcement. The unit has also provided drug education to other agencies such as Juvenile Services and the Office of Children Services regarding drug endangered children as well as drug and methamphetamine clandestine lab identification.

This unit's enforcement duties range from the street level drug sales to the interdiction of methamphetamine manufacturing organizations. This year the unit has had undercover operations in Seward, Homer, Kenai, Soldotna, Kasilof and Girdwood. Investigations vary from commercial marijuana grows, the manufacture of methamphetamine and the distribution of marijuana, cocaine, methamphetamine, and prescription drugs.

2007 Overview

JANUARY

ABADE SCAN worked closely with AST Soldotna Patrol resulting in the discovery and eradication of two marijuana grows and a partial methamphetamine lab.

FEBRUARY

SCAN investigated a tip and secured two search warrants for two properties owned by the same person. A total of \$769 and 99 marijuana plants were seized.

MARCH

SCAN investigated a tip from a landlord and secured a search warrant for a rental property. Fifty-four marijuana plants and 40 non-rooted starters were seized.

MAY

SCAN traveled to Kodiak and served 5 separate search warrants secured by a Kodiak Police investigator. Seized 14 grams crack cocaine, \$13,658 cash and four firearms.

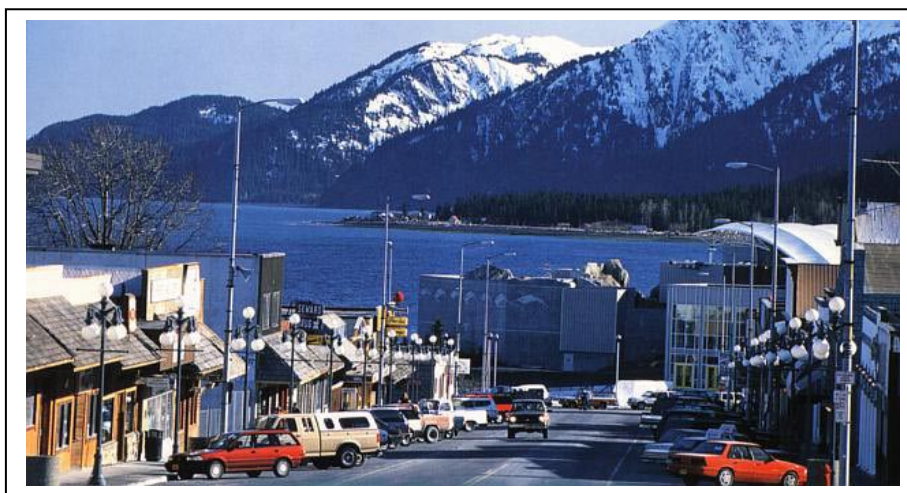
JUNE

During a fire investigation a 934 plant marijuana grow operation was discovered. The structure containing most of the grown was destroyed due to the fire.



OCTOBER

Working closely with AST Patrol on the Kenai Peninsula, ABADE SCAN participated in a number of investigations leading to the seizure of 710 grams of processed marijuana, 356 live marijuana plants, 25.7 grams of black tar heroine, 8.1 grams of cocaine, 3 grams of methamphetamine and 92 diverted prescription pills. These cases resulted in 42 charges being forwarded to the District Attorney's office on 24 defendants.



City of Seward



Southeast Alaska Narcotics Enforcement Team

The primary responsibility for drug enforcement in southeast Alaska lies with the Southeast Alaska Narcotics Enforcement Team (SEANET). This team is comprised of two offices one in located in Juneau that consists of one AST sergeant, two Juneau Police Department officers and a Juneau Police Department administrative support position, supplied by Chief Greg Browning. The other office is located in Ketchikan and consists of one AST investigator. The SEANET AST Sergeant oversees and works hand-in-hand with the South East Alaska Cities Against Drugs (SEACAD) project that is overseen by Chief Sheldon Schmitt of the Sitka Police Department. Chief Schmitt along with Chief Dale of the Petersburg Police Department provide narcotics investigators to work alongside the SEANET investigators to focus on street level dealers, major offenders, and manufacturing. Some of the investigative methods used by this team include interdiction activities and undercover operations.

Of particular note in Southeast Alaska is the quick rise in the availability, sales, possession, and use of methamphetamine. It appears that most of the substance is introduced into the region in a powder form, having been manufactured at other locations and imported into Southeast Alaska. With the porous nature of the international borders it is problematic to conduct any serious border interdiction.

2007 Overview

JANUARY

SEANET investigators in Ketchikan conducted an investigation into a marijuana growing operation and seized 43 marijuana plants. Additional marijuana grows were seized in the communities of Craig, Klawock, and Hollis.

MARCH

SEANET investigators, in cooperation with the *Sitka Police Department* and *SEACAD*, conducted an investigation into the illicit distribution of painkillers. Investigators served a search warrant at a residence and seized 243 tablets of Oxycontin, 139 Methadone tablets, 107 Vicodin tablets, \$2,600 suspected drug proceeds, and three handguns.

SEANET investigators conducted an investigation into the distribution of cocaine from New York to Juneau, and contacted a suspect at the Juneau International Airport upon arrival via a commercial flight from Seattle.

Investigators located a suspicious package and requested the assistance of the *United States Postal Inspectors (USPI)* and the *DEA* who obtained a search warrant which resulted in the seizure of 0.56 pounds of cocaine, 28 grams of methamphetamine, and 48 tabs of Oxycontin. Investigators estimated the cocaine represented 2,560 street level dosage units and the methamphetamine represented 280 street level dosage units.

MAY

SEANET investigators conducted an investigation into the distribution of methamphetamine from California to Juneau, and contacted a suspect at the Juneau International Airport as



they arrived on a commercial airline flight from Seattle. Investigators seized 3/4 pound of methamphetamine from the suspect's checked baggage. Investigators subsequently arrested the suspect and served a search warrant on the suspect's residence, resulting in the seizure of one rifle and one handgun. Investigators estimate the methamphetamine represented 3,405 street level dosage units.

JULY

SEANET investigators conducted an investigation into the distribution of methamphetamine from Seattle to Juneau and contacted a suspect at the Juneau International Airport upon arrival via a commercial flight. The investigation resulted in the seizure of approximately 0.90 pound of methamphetamine, 65 tabs of Hydrocodone, and the arrest of the suspect. Investigators estimated the methamphetamine represented 4,090 street level dosage units.

The *Hoonah Police Department*, in cooperation with SEANET Investigators, contacted a suspect upon arrival from Juneau via the Alaska Marine Highway. The suspect was arrested for an outstanding warrant. A scent detection canine indicated and a search warrant service resulted in the seizure of \$10,000 in suspected drug proceeds and one pound of marijuana. Investigators estimated the marijuana represented 4,540 street level dosage units.

AUGUST

SEANET investigators, in cooperation with the *Hoonah Police Department*, served a search warrant on a vessel in Hoonah Harbor and seized 1.40 pounds of marijuana, seven tabs of Oxycontin, \$2,600 in suspected drug proceeds, a radio frequency detector, firearms, and arrested one suspect. Investigators estimate the marijuana represented 6,356 street level dosage units.

OCTOBER

SEANET investigators in Ketchikan assisted the *United States Coast Guard* and seized 1.7 pounds of hash oil and six grams of marijuana from a commercial fishing vessel.

SEANET investigators in Ketchikan, in cooperation with the *United States Postal Inspectors*, conducted an investigation into the distribution of heroin from Seattle, Washington to Ketchikan and seized 31 grams of heroin that was estimated as representing 310 street level dosage units.

SEANET investigators conducted three investigations in cooperation with the *United States Postal Inspectors* into the distribution of heroin from Arizona to Juneau. Investigators served search warrants and seized 23.5 grams of heroin which they estimated as representing 235 street level dosage units.

NOVEMBER

SEANET investigators identified a suspicious package shipped via a local air carrier from Juneau to a suspect in Hoonah. SEANET reported the package to the *Hoonah Police Department* which utilized a scent detection canine during the investigation. The resulting search warrant service led to the seizure of 98 grams of marijuana. The suspect shipped the package on the day of their pending trial in Hoonah for marijuana distribution. Investigators estimated the marijuana represented 980 street level dosage units.



SEANET investigators contacted a suspect at the Juneau International Airport upon arrival via a commercial flight from Eugene, Oregon. The suspect was detained while a search warrant was obtained, resulting in the seizure of 184.6 grams of cocaine. The cocaine was transported by the suspect via an internal body carry. Investigators estimate the cocaine represented 1,846 street level dosage units.

SEANET investigators, in cooperation with the *United States Postal Inspectors*, conducted an investigation into the distribution of marijuana from Washington to Ketchikan. Investigators served a search warrant on a residence and seized approximately six pounds of marijuana and over \$113,000 cash that is suspected of being the proceeds from illicit marijuana sales. Investigators estimate the marijuana represented 27,240 street level dosage units of marijuana.

DECEMBER

SEANET investigators, in cooperation with the *United States Postal Inspectors* and *SEACAD*, conducted an investigation into the distribution of heroin, psilocybin mushrooms, and marijuana from California to Juneau. The USPI located a suspicious package resulting in the seizure of 3.4 grams of heroin, 117 grams of psilocybin mushrooms, and 174 grams of marijuana. Investigators served a search warrant at the 17 year-old suspect's residence. Investigators estimate the marijuana represented 1,740 street level dosage units and the psilocybin mushrooms represented 1,117 street level dosage units.

SEANET, in cooperation with the *United States Postal Inspectors* and *SEACAD*, conducted an investigation into the distribution of marijuana from California to Juneau. The USPI seized a suspicious package containing approximately three pounds of marijuana. The USPI located a second suspicious package addressed to the same suspect. Investigators served a search warrant at the residence and seized the delivered package containing 3.70 pounds of marijuana, an additional 2.13 pounds of marijuana, \$10,500 in suspected drug proceeds, and a marijuana growing operation with 17 marijuana plants. Investigators estimate the seized marijuana represented over 40,000 street level dosage units.



City of Sitka



Western Alaska Alcohol and Narcotics Team

This team's primary area of responsibility is Alaska's western region, to include: Kotzebue, Nome, Bethel, Dillingham and the Aleutian Chain. For most of 2006, the WAANT consisted of one AST sergeant and two AST investigators in Anchorage, three AST investigators in Bethel, one AST investigator in Nome, one AST investigator in Dillingham, one AST investigator in Kotzebue and local police officers in Kotzebue and Dillingham. In addition, the unit also has criminal justice technicians in Anchorage and Bethel.

One of the positions in Bethel and one in Anchorage are dedicated specifically to alcohol interdiction and investigations. During all of 2007, a narcotics detection K9 was primarily stationed in Bethel but worked in many of the hub communities in Western Alaska.

Due to the vast number of local option communities in Western Alaska, a significant portion of this team's focus is on alcohol enforcement. They target smugglers and bootleggers through undercover operations and interdictions.

Two common methods of importing alcohol and illegal drugs into rural communities are via the U.S. Postal system and local airlines. Alcohol shipped legally to regional hubs such as Nome, Bethel, and Kotzebue is then illegally distributed to local option communities that have banned alcohol or have limited the possession of alcohol under the local option laws of Alaska.

Because much of the alcohol and drugs being sold illegally in Alaska are shipped through the U.S. mail, the U.S. Postal Inspectors Service conducts interdictions with direct support from AST and CDSP. These efforts consist of US Postal Inspectors assisted by AST and CDSP members monitoring packages en route to outlying villages and communities through postal facilities in Anchorage, Fairbanks and Bethel. Suspicious packages are brought to the attention of the Postal Inspectors, who then decide how best to investigate the shipment.

The investigations of many of these seizures are coordinated through AST and/or other local law enforcement entities. The Postal Inspectors office relies heavily on support from ABADE. This support includes resources like scent detection canines, intelligence information and follow-up efforts. Not only do these resources assist in the seizure, they also help successfully investigate and prosecute those involved in alcohol bootlegging and drug trafficking.

The cross deputation of AST WAANT team members by the Postal Inspectors Office occurred in 2007. This cross deputation has given WAANT investigators additional authority to conduct investigations involving postal parcels.

In other WAANT operations, the team has conducted numerous investigations in Anchorage and in the communities of Western Alaska. Investigations ranged from major bootlegging operations to marijuana grows and distribution operations. Criminal cases related to the distribution of illegal drugs including marijuana, psilocybin, cocaine and prescription medications were also investigated.



2007 OVERVIEW

JANUARY

WAANT investigators in Kotzebue arrested a female subject after she was found in possession of 48 750ml bottles of distilled spirits. She was attempting to transport the alcohol to the local option community of Kiana where the residents have voted to have a "dry" community.

FEBRUARY

WAANT investigators in Anchorage working with Postal Inspectors seized a parcel which was found to contain approximately seven pounds of marijuana.

MARCH

WAANT investigators in Bethel seized 34 liters of alcohol hidden inside 72 water bottles at an air cargo carrier in St. Mary's.

APRIL

The WAANT investigator in Nome contacted two male subjects as they awaited a flight to the local option dry community of Elim. Incident to the contact 28 750ml bottles of distilled spirits were seized from their luggage.

MAY

The WAANT investigator in Kotzebue seized 274 grams of marijuana from a female subject's diaper bag as she arrived on a flight from Anchorage.

JUNE

WAANT investigators in Bethel, working with Postal Inspectors from Anchorage seized 25 Oxycontin pills from a male subject.

JULY

WAANT investigators in Dillingham concluded an investigation into the illegal importation of alcohol by the Togiak River Lodge. The investigation resulted in the seizure of 41 750ml, 3 375ml, and 6 1.75 liter bottles of distilled spirits, 20 750 ml bottles of wine, 45 liters of boxed wine and 387 12oz beers.

AUGUST

WAANT investigators in Bethel seized a total of 89 750ml bottles of distilled spirits from an air cargo carrier in Bethel. This seizure was the result of new legislation making it illegal for vendors to ship alcohol to communities for individuals with addresses outside of those communities.

SEPTEMBER

The WAANT investigator in Nome filed a 53 count criminal complaint in Nome District Court charging four adults with a variety of alcohol related charges to include sales, importation, providing alcohol to minors etc. The suspects were using juveniles to import alcohol for sale to the local option dry community of Gambell. The case was resolved in January 2008, with pleadings to various alcohol sales and importation offenses.



The WAANT investigator in Kotzebue, acting on a tip, contacted a female subject as she landed on a chartered flight in the local option dry community of Ambler. Incident to the contact 66 750ml bottles of distilled spirits were seized.

OCTOBER

WAANT investigators in Anchorage seized 32 750ml bottles of distilled spirits from a postal parcel being mailed from Fairbanks to the local option dry community of Wainwright.

NOVEMBER

WAANT investigators in Bethel assisted AST Patrol and the Hooper Bay Police Department with a drug investigation. The case resulted in the seizure of 1,225 grams (2.7 pounds) of marijuana.

DECEMBER

WAANT investigators in Anchorage arrested a female subject for felony importation after she attempted to ship 48 750ml bottles of distilled spirits to the local option community of Point Hope.



Village of Kiana

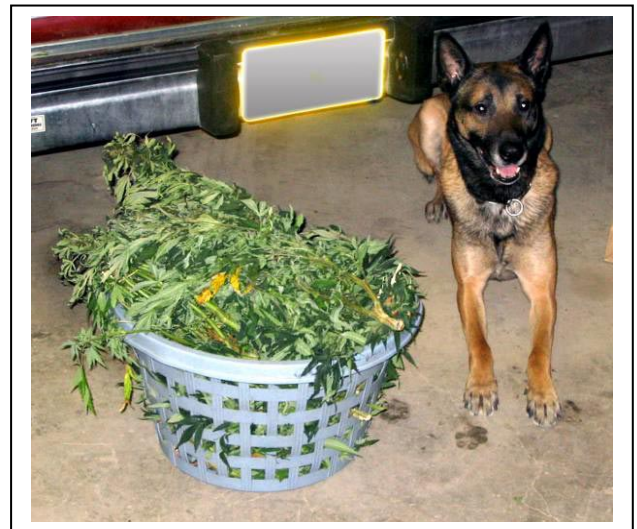


Alaska State Trooper Canine Unit

The Alaska State Troopers Canine Unit currently consists of three dual-purpose canine teams and three single-purpose drug detection canine teams. The dual-purpose canine teams are assigned in Anchor Point, Klawock and the Mat-Su Valley. The teams function as patrol troopers first and as canine teams secondarily. The dual-purpose canine teams works as both a patrol canine team as well as a drug detection canine teams. As a dual-purpose canine team they are proficient in man tracking, suspect apprehension, building searches, area searches, and drug detection searches. The single-purpose canine teams work solely as a drug detection canine team. The drug detection canines are stationed out of Anchorage and Bethel but will respond to any location in the state.

In addition to training Alaska State Trooper's canines, in 2007 the unit supported and trained canine teams for Fairbanks Police Department, Fairbanks Airport Police and Fire Department, Wasilla Police Department, Kenai Police Department, Kodiak Police Department, Valdez Police Department, and Sitka Police Department. The Alaska State Troopers offer eight days of training every quarter that is open to all police departments with canine teams wishing to attend. In addition the Alaska State Troopers Canine Unit offers and annual certifications for canine teams for both patrol canine teams as well as drug detection canine teams.

In 2007, the Alaska State Troopers Canine Unit was directly involved in 124 felony arrests, 59 misdemeanor arrests, the seizure of 1,129.7 grams of heroine, 30,194 grams of cocaine, 2,032.2 grams of methamphetamine, 16,530 grams of marijuana and \$710,096 cash from drug proceeds.





The Drug Enforcement Administration (DEA) in Alaska is broken down into the Anchorage District Office (DO) and the Fairbanks Post of Duty. The Anchorage DO is broken down into the Enforcement Group (EG) and the Alaska Interdiction Task Force (AITF). Both Groups operate as Task Forces (TF), in that they are comprised of DEA Agents as well as officers from other departments. The EG has federally deputized TF Officers from the Anchorage Police Department (PD) while the AITF, which is housed at the Ted Stevens Anchorage International Airport, consists of federally deputized TF Officers from the Alaska State Troopers (AST), Anchorage PD, Airport Police, as well as several other federal agencies as needed. The Alaska National Guard Counter Drug Support Program supports the DEA throughout the entire state.

The DEA in Alaska is deeply involved in working with all state and local drug units to enhance and facilitate investigations of major offenders throughout Alaska. The DEA is collocated with both the Anchorage PD Drug Enforcement Unit, as well as the AST Major Offenders Unit, in DEA facilities in Anchorage.

The DEA continues to furnish training to state and local agencies. The DEA provided funding for law enforcement personnel to be trained and re-certified in clandestine laboratory investigations as well as narcotics investigations. The DEA hosted a two-week Basic Drug Enforcement School which was attended by officers from throughout the entire state as well as a leadership course for drug supervisors. The DEA also provided funding for disposal of clandestine methamphetamine laboratories and marijuana eradication operations.

The DEA continues to facilitate forfeiture proceedings related to assets and funds seized as a result of criminal investigations and drug trafficking. This effort allows state and local law enforcement agencies to receive a portion of the assets seized, which in turn funds additional criminal investigations. During calendar year 2007, the Anchorage DEA DO was involved in cases responsible for the seizure of over \$2.8 million in drug-related assets and proceeds.

Drug seizures by DEA

	Cocaine (kilos)	Heroin (kilos)	Marijuana (lbs)	Meth (lbs)
2005	26.09	0	5.38	9.32
2006	28.91	.20	937.33	7.93
2007	54.80	1.10	135.58	10.60



Emerging Trends in 2007

In July of 2006, pseudoephedrine regulations were adopted by the State of Alaska. This armed law enforcement professionals with a valuable tool to combat meth labs in the state. The table below shows the number of reported meth labs seized by ABADE.

Reported Meth Labs Seized in Alaska				
2003	2004	2005 *	2006 *	2007*
66	80	42	18	11

* Statistic represents labs seized by ABADE only.

In 2007, there has been an increase in the availability of heroin. The table below shows the increase in the heroin seized by ABADE investigator in 2007.

Reported Heroin Seized in Alaska			
<small>(reported in grams)</small>			
2004	2005	2006	2007
113.30	18.80	646.57	1,129.70

Alcohol, cocaine, methamphetamine, marijuana and pharmaceuticals continue to be recognized as the primary substances of abuse and are the focus of most law enforcement efforts. During 2007 law enforcement officials continued to see methamphetamine use and manufacturing as a significant problem, but with the reduction of meth labs we have witnessed an increase in the availability of heroin, cocaine, MDMA/Ecstasy and LSD. Along with significant increases in the abuse of prescription drugs, many of which are obtained with fraudulent prescriptions, other drugs such as LSD, Ecstasy and designer and/or "club" drugs have given cause for concern. Based on anecdotal information there is a significant increase in the availability of these controlled substances throughout Alaska but primarily in more urban areas. The drugs of choice in rural Alaska continue to be marijuana and alcohol.

The reduction of meth labs is believed to be due to the combination of increased enforcement efforts coupled with newly adopted pseudoephedrine restrictions. However, meth labs continued to be discovered inside hotel/motel rooms creating chemical and fire hazards for other civilians that also occupy the buildings. Due to the volatile chemicals involved, investigators need to wear hazardous material protective gear when responding to meth labs. Also due to the hazardous conditions found at meth labs, investigators are required to be trained and certified in the dismantling of meth labs.

Violent crime related to meth usage also appears to be on the rise. Although there continues to be a decrease in the number of reported meth labs in 2007, we have seen a spike in the amount of imported meth from source cities.

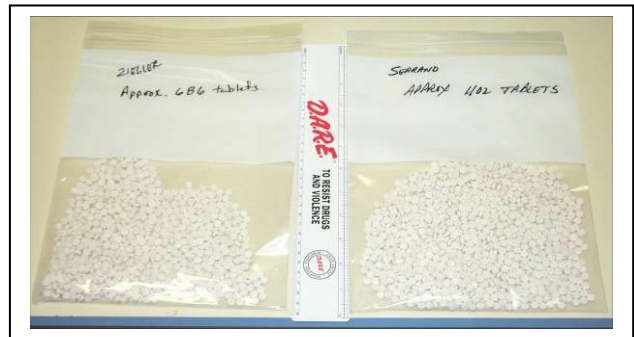


Summary

The Alaska Bureau of Alcohol and Drug Enforcement, with its unique ability to interdict and investigate cases across the state, recognizes that drug abuse is not confined to any one geographical location or any economic strata in our state. Drug and alcohol abuse affects all Alaskans, despite social, ethnic, racial and economic barriers.

We also recognize that the ill-gotten gains of drug dealers and alcohol smugglers promote an increase in lawlessness of all types. This lawlessness is not isolated to the use of controlled substances. It includes, but is not limited to, burglary, theft, domestic violence assaults and murder. By the eradication of such activity and the arrest of those who would profit off the misery of others, we will make Alaska and the communities therein a much better and safer place to live and raise a family. The Alaska State Troopers, Alaska Bureau of Alcohol and Drug Enforcement, along with our partner agencies throughout the state, diligently dedicate our resources and energy toward that goal.

The Alaska State Troopers, Alaska Bureau of Alcohol and Drug Enforcement is committed to working with all interested agencies in the fight against substance abuse throughout the state by using innovative concepts to deal with the illegal sale and distribution of alcohol and drugs. We are also committed to focusing on increased awareness and knowledge of drug abuse through educational presentations to the Public Safety Academy and in public forums, such as schools, service organizations and other community groups.



The 2007 Annual Drug Report was authored by the Alaska State Troopers, Alaska Bureau of Alcohol and Drug Enforcement. It can be accessed via the Department of Public Safety internet site therefore there is no publication cost. It is intended to inform Alaskans about the type and frequency of drug related crime reported in Alaska during 2007.

The Alaska State Troopers, Alaska Bureau of Alcohol and Drug Enforcement supplied the majority of information and photos presented in this report. Statistical data was provided by the Alaska State Troopers, Alaska Bureau of Alcohol and Drug Enforcement and the Drug Enforcement Administration.

