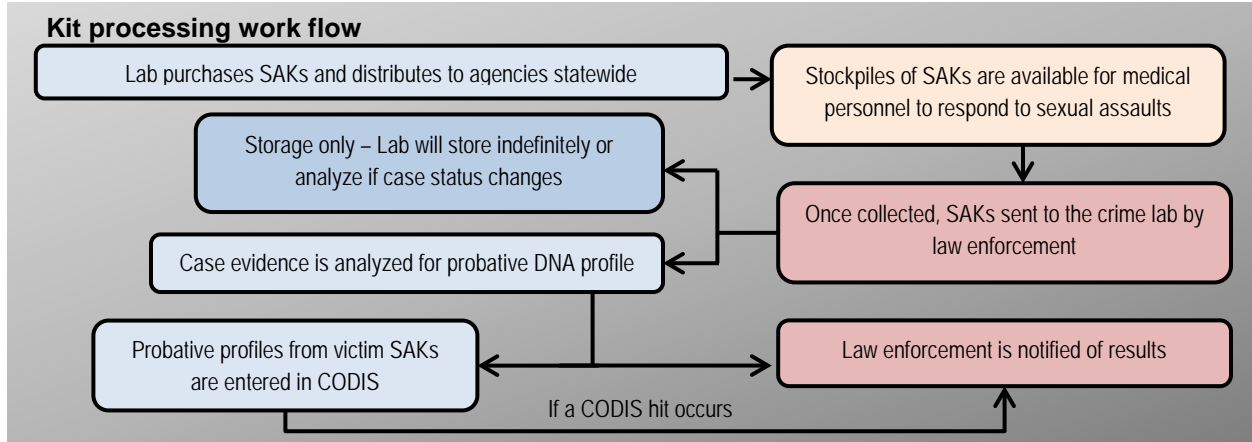




2018 Sexual Assault Backlog Executive Summary

ALASKA SCIENTIFIC CRIME DETECTION LABORATORY



	2013	2014	2015	2016	* 2017
Victim SAKs submitted to AK Crime Lab :					
<i>Total</i>	265	259	326	344	426
<i>Storage Only</i>	NA	NA	8	66	144
Victim SAKs worked	265	259	318	278	183*
# Profiles entered into CODIS from SAKs	58	51	74	79	27*
# CODIS hits in sex assault cases	17	17	46	47	22*

- Counts of submitted SAKs, SAKs worked, and profiles in CODIS reflect cases opened at the lab in the year listed
- Casework still in progress for 2017 cases
- Storage only submissions began in 2015

Glossary

DNA profile A DNA profile is the ultimate result of collection and analysis of biological evidence; and probative DNA profiles are used to link case evidence together or to identify an offender through CODIS.

Combined DNA Index System (CODIS) The Combined DNA Index System, or CODIS, blends forensic science and computer technology into a tool for linking violent crimes. It enables federal, state and local forensic laboratories to exchange and compare DNA profiles electronically, thereby linking serial violent crimes to each other and to known offenders. (Definition taken from the FBI's Combined DNA Index System website)

Storage / Storage Only All SAKs submitted to the AK Crime Lab are stored indefinitely. Some kits (such as those where victims choose to remain anonymous) are submitted for Storage Only, but these can be analyzed at a later date if case circumstances change.

Sexual assault kit (SAK) A box of materials used to collect samples (biological evidence) from a person's body following an alleged sexual assault. SAKs are frequently collected from victims, often by a forensic-medical examiner. In about 1/3 of sexual assault cases submitted to the Alaska Crime Lab, SAKs are also collected from suspects. Additionally, some sexual assault cases do not include victim SAKs; these cases typically include evidence such as clothing or bedding.

Backlog Cases, including those with SAKs, which are not completed within 60 days of submission to the AK Crime Lab are counted as backlog.

Turnaround time (TAT) The AK Crime Lab measures turnaround time as the time between the date when all necessary evidence is submitted for analysis, and final completion of laboratory analysis. Current TAT for all Forensic Biology cases is 161 days.